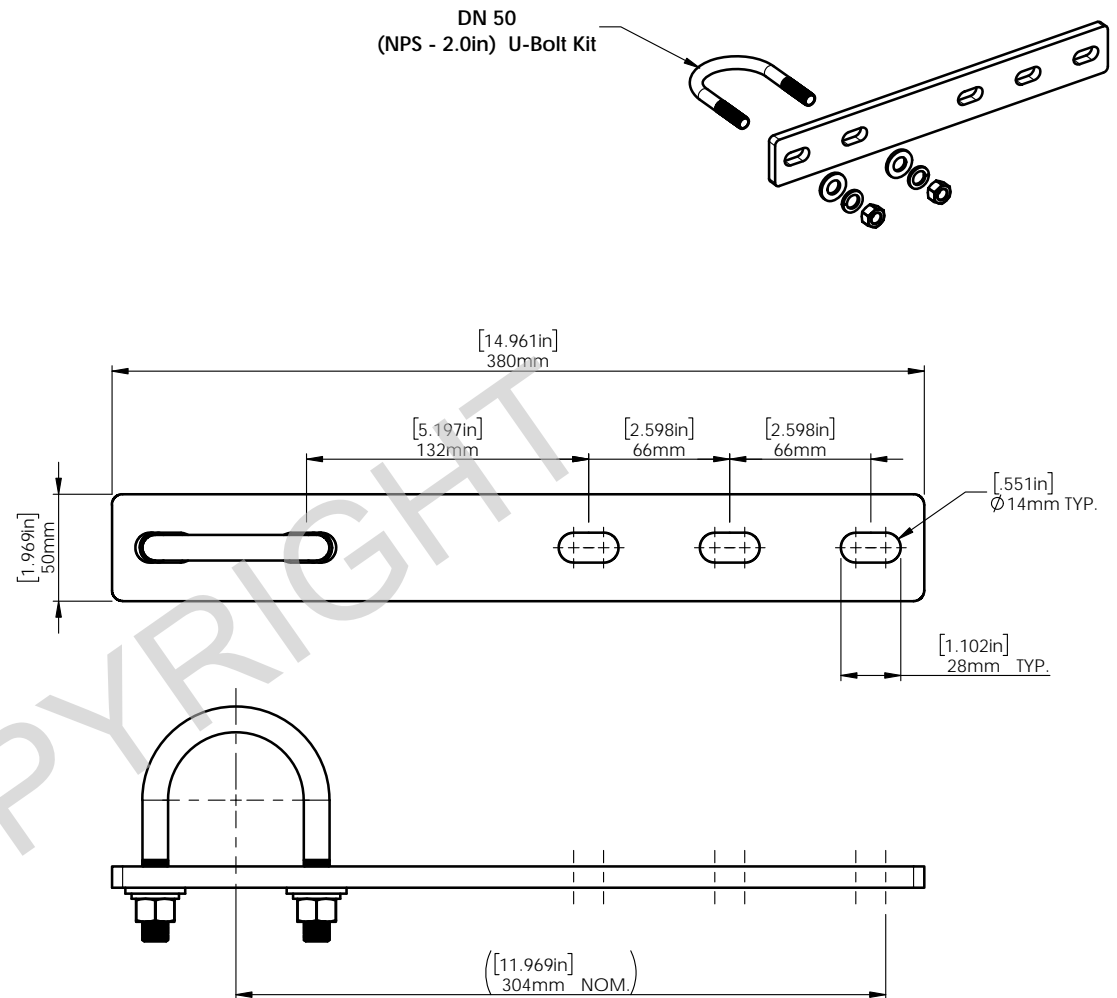


**TYPICAL INSTALLATION**



**PART No = LMK8011-50-HG**

WEIGHT = 1.6 kg [3.52lb]

FINISH = HOT DIPPED GALVANIZED

SUPPLIED WITH 1 x DN50 [NPS - 2.0in] U-Bolt Kit



Scan Code with  
QR Reader app for more  
Swivelpole™ Light Mount  
Product Information


**PATENTED**  
PRODUCTS

[www.swivelpole.com](http://www.swivelpole.com)



**Swivelpole**

This document is the property of and protected by copyright owned by Swivelpole Group Pty Ltd. The designs and other information embodied in this document comprise confidential information of Swivelpole Group Pty Ltd and form part of products covered by international patents and registered designs including US patent No 6957832. Unauthorised use, reproduction and disclosure are strictly prohibited. This document must not be removed from the premises of the licensed user of this document without Swivelpole Group Pty Ltd's prior approval.

ALL DIMENSIONS ARE IN MILLIMETERS / INCHES	PROJECT	SERIES / CODE	PART NUMBER	(RQ1354)	
	SWIVELPOLE™	LM	LMK8011-50-HG		
	DRAWN BY	DATE	TITLE DN50 [NPS - 2.0in] Mounting Bracket Kit Typical installation Client detail		
	SP	15-06-10			
CHECKED BY	DATE				
FB	16-06-10				
APPROVED BY	DATE				
PP	16-06-10				
THIRD ANGLE PROJECTION	SCALE	DRG No	REV	A3	
	1:75	C-NA-LMK8011-50-HG	1		